

Motorized Ball Valve



◆ General

Motorized Ball Valve is widely used in HVAC water system, which consist of brass ball valve and actuator, valve is driven by synchronous motor can act the valve open or close to control the flow of water, on-off and modulating can be optional.

◆ Technical Data

Voltage: AC24;220V±10%, 50/60Hz

Power: 6VA (when valve open and close)

Motor: synchronous motor

Torque: 4Nm

Act Time: 15S-45S

Lead Length: 50cm

Nominal Pressure: 1.6Mpa

Close off differential pressure: <math><0.4\text{Mpa}</math> (2-way)

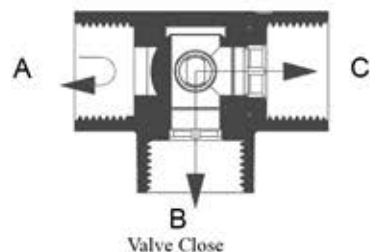
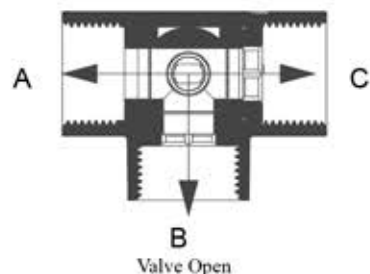
<math><0.35\text{Mpa}</math> (3-way)

Connector: Female thread

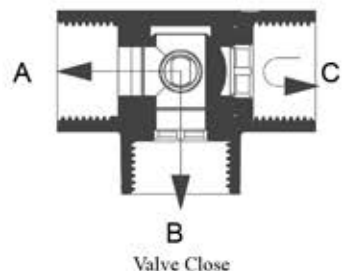
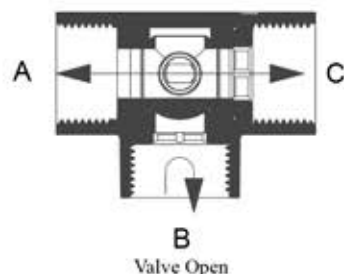
Medium: cold or hot water or 50% glycol

Medium Temperature: 1-95 °C

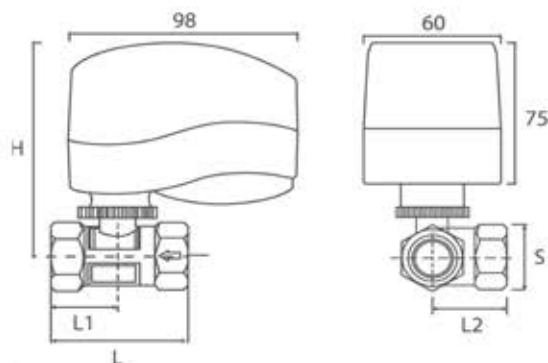
◆ 3 way valve mixing



◆ 3 way valve diverting

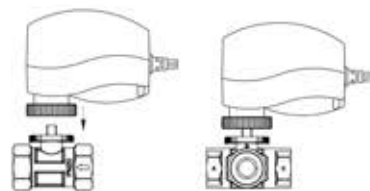


◆ Dimensions

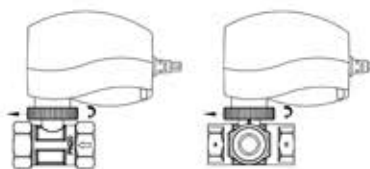


Size	L	L1	L2	H	S
1/2"	63	31.5	30	100	27
3/4"	63	31.5	33	100	32
1"	73	36.5	42	107	40
1-1/4"	83	41.5	50	110	48

◆ Installation Actuator

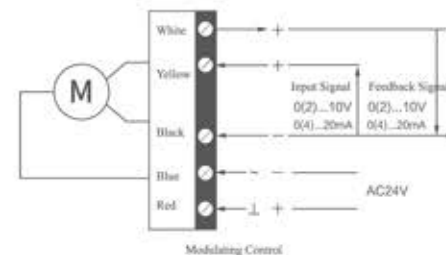
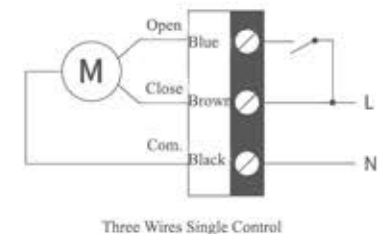
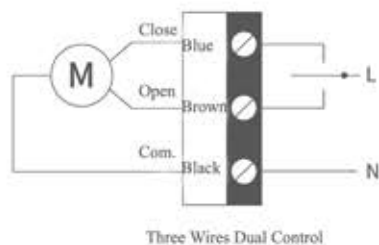


① Put the position hole in actuator into rod above the valve.



② Turn the nut on valve body according to arrow indicated above picture firmly

◆ Wiring Diagrams



! Forbid parallel wiring more than 2 pcs products.
Please connect comply with wire color, or result in product damage.

Above data are subject to change without prior notice