

RT226-A Series fan coil unit thermostat manual



Application

RT226-A Series series fan coil thermostat is suitable for controlling central air conditioning and fan coil unit. By comparing the indoor temperature and setting temperature, to adjust fan coil unit and turn on/off electric valve. to realize adjust temperature and saving energy purpose. RT226-A Series adopts microcomputer control technology, large-screen display, and have following display status: working state (cooling, heating, ventilation), fan speed (high, medium, low, automatic), indoor temperature, setting temperature, clock, seven days and four time periods Time programming, timing switch, etc

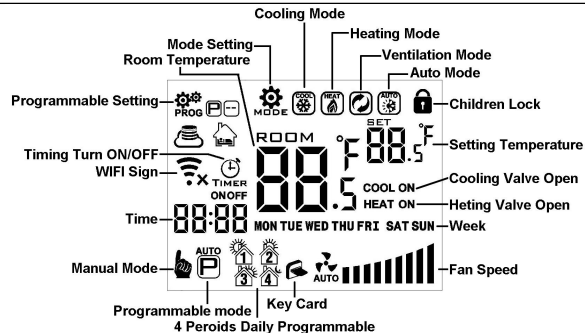
Technical data

Voltage: AC200~240V
 Current: 3A
 Accuracy: ±0.5°C
 Setting range: 5°C - 35°C
 Sensor: NTC(10k)1%
 Mounted: in the wall type

Output: On/off type
 IP: IP20
 Display temperature range: 0~70°C
 work environment: -10~60°C
 Size: 86*86mm

Button

No.	Icon	Description
A		Increase key: short press to adjust number and temperature, long press to check external sensor temperature
B		To choose setting item
C		Decrease key: short press to adjust number and temperature
D		Fan key: when work with "SET" key together, then "confirm" key
E		Power key
F		Press them together to enter matching wifi mode



WIFI connected, if flashing, then matching wifi mode

WiFi disconnection

cloud icon, if flashing, then enter AP mode

Operation

Operation	Description	Legend
Turn on/off	press "⏻" to turn on; press again to turn off, meanwhile closed fan coil unit and electrical valve	Display main interface
Setting temperature	Thermostat turn on; press "▼" to decrease setting temperature, press "▲" to increase setting, each time change by .5°C	
Fan Speed	Thermostat turn on, press "🌀" to choose fan speed (high) (mid) (low) (auto)	(high) (mid) (low) (auto)
Setting time	Thermostat turn on, press "🕒" to set time: Minute "mm" flashing, press "▲" or "▼" to adjust, press "🌀" to next setting as same method to set hour and week. finally press "🌀" or wait 5s to exit	
Timer	After connected wifi, click "cloud" on the right corner of APP to set	
Working mode	Thermostat turn on, long press "⚙️" 5s, choose next press "🌀" to choose mode. "🌀" is mean cooling mode, "🔥" is mean heating mode, "🌀" is mean ventilation mode, "🌀" is mean auto mode	 Auto heating mode Auto cooling mode Heating mode Cooling mode
Manual/programmable	Thermostat turn on, short press "⚙️" to run programmable mode: press again to run manual mode	
Control valve	When cooling mode (heating mode), indoor temperature more (lower) 1°C than setting temperature, open valve; after equal, closed valve, fan is still running	Ventilation mode (fan is not control by temperature as default) If fan be controlled by temperature, then valve and fan will be closed.

Locked function	If open locked function, the will be auto locked if have not any operation within 10S. Long press to unlock	
Alarm	E1:inner sensor alarm E2:external sensor alarm When temperature more than 55°C,then display“HI” When temperature lower than 0°C,then display“LO”	
Sleep mode	Long press , is flashing,short press to run it,short press to cancel	Remark:Sleep mode is not available when run ventilate mode or auto mode

Set Programmable

HY08AC thermostat support set different time and different temperature;Compatible with 5+2,6+1,7days Programmable

Long press 3-5S, next short press to choose , then short press to set programmable,use and to adjust value.After short press to set next time section setting

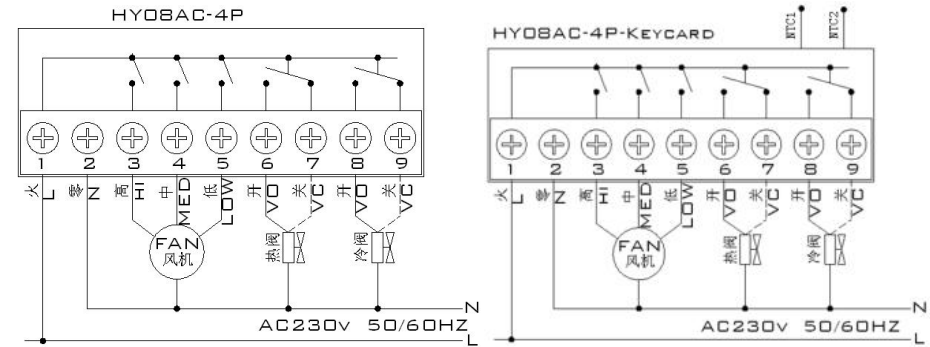
Time section	Icon	Time (default)	Temperature(default)
Monday to Sunday	1	06:00	20°C
	2	8:00	15°C
	3	17:30	22°C
	4	22:00	15°C

Advance setting

Turn off thermostat ,long press for 5S to enter press“”or“”to set item.Short press to set next item

Symbol	Item	Parameter	Default
A1	Temperature Calibration	-9-+9°C	0.5°C Accuracy Calibration
A2	Children Lock	1:half lock;(It is available to turn on/off and adjust temperature) 0:full lock	1
A3	Setting the lowest limit temperature	5-15°C	5°C
A4	Setting the highest limit temperature	16-50°C	35°C
A5	Fan is control by temperature	0:YES 1:NO	0
A6	Programmable	0:5+2 1:6+1 2:7	0
A7	Choose valve output	2:2pipe	4

		4:4 pipe	
A8	Choose sensor	N1:inner sensor N2:external sensor N3:Double sensor when choose N3:①In the cooling state, normally only valve is opened. When the temperature is detected to be lower than (X-2) °C, the fan is turned on. When the fan detects the temperature $\geq X^{\circ}\text{C}$, the fan is turned off;②In the heating state, normally only valve is opened, and the fan is turned on when the external temperature is detected to be $\geq X^{\circ}\text{C}$. When the temperature is detected to be lower than (X-2) °C, the fan is turned off.	N1
A9	Set temperature for external sensor	20-60°C	38°C
AA	Reset	Display A o, press key until whole show	Ao



Cautions on Installation

- To prevent the thermostat display from a high fluctuation, special treatment has been made to the program. Therefore, it is normal that the thermostat cannot immediately display the sudden change of temperature.
- The thermostat installed on 1.5m above the ground.
- For the thermostat installed,please take care not to install it to the wall corner, door / window side or behind the door or in such unheated area as exterior wall. Avoid hot / cold air duct, radiator, flue or thermal pipe
- When install the power supply, make sure that the power cable is well insulated.
- Don't open the internal circuit board..
- HY08AC series thermostat design for the standard 75x75x 35mm wall mount box installed. Follow the instructions to open the rear cover base, mount it on the wall and wire it.
- Before installing the thermostat, make sure that the system is disconnected. The maximum voltage of the system shall meet the requirements specified in the Instruction Manual (Max. AC Voltage: 250V).

WIFI APP Download And Sign Up And Pair Thermostat

Preparation required for Wifi Connection:

A 4G mobile phone and wireless router, reconnect the wireless router on the mobile phone WLAN interface, and record the WIFI password [need to be used when the thermostat is paired with the Wifi.

Note: Wifi from router must be 2.4G, 4G wifi from the other mobile phone hotspot is also ok, 5G router wifi is not ok.

Step 1 Download your APP



Scan following QR cod and download APP through browser(Android also can search “Smart RM” or “Smart Life” at Google Play, iPhone also can search “Smart RM” or “Smart Life” at App Store

Step 2 Register your account



- After install APP,click “register” (Fig 2-1)
- Please read the Privacy Policy and press Agree to proceed to the next step. (Fig 2-2)
- Registration account name uses your available Email Or mobile phone number, and please select Region, then click “Continue”(Fig 2-3)
- You will receive a 6-digit verification code from your email or SMS and enter your phone (Fig 2-4)
- Please set the account password, Password must contain 6-20 letters and numbers. click “Done”(Fig 2-5)

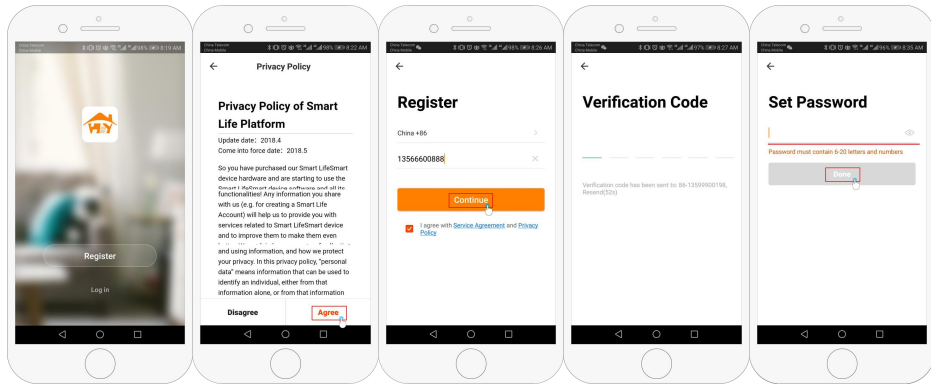


Fig 2-1

Fig 2-2

Fig 2-3

Fig 2-4

Fig 2-5

Step 3 Create family information(Fig 3-1)

1. Fill in the family name(Fig 3-2).
2. Select or add a room(Fig 3-2).
3. Set location (Fig 3-4)

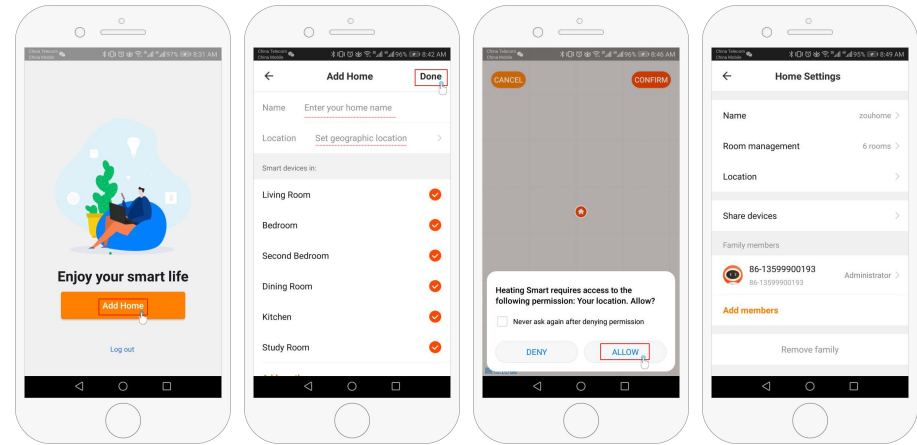


Fig 3-1

Fig 3-2

Fig 3-3

Fig 3-4

Step 4 Connect your Wi-Fi signal

In the power-on state, press and hold the button and at the same time, the icon flashes to indicate the EZ distribution mode, the icon flashes to indicate the ap distribution mode, the icon indicates that the phone has been disconnected with the device.

Press "Add Device" or "+" in the upper right corner to add the device (Fig 4-1) and select the device type "Thermostat" (Fig 4-2)

On your thermostat, Click Confirm icon rapidly blink. then select your network and back to your app to enter the password of your wireless router (fig 4-4) and confirm.The app will connect automatically (Fig 4-5) This may typically take up to 5~90 seconds to complete. This is Ez mode which provides fast network connection between your app and your device.

Your room name could be edited when the device is connected , And you can choose the corresponding room location. For example, bedroom, kitchen, living room, etc

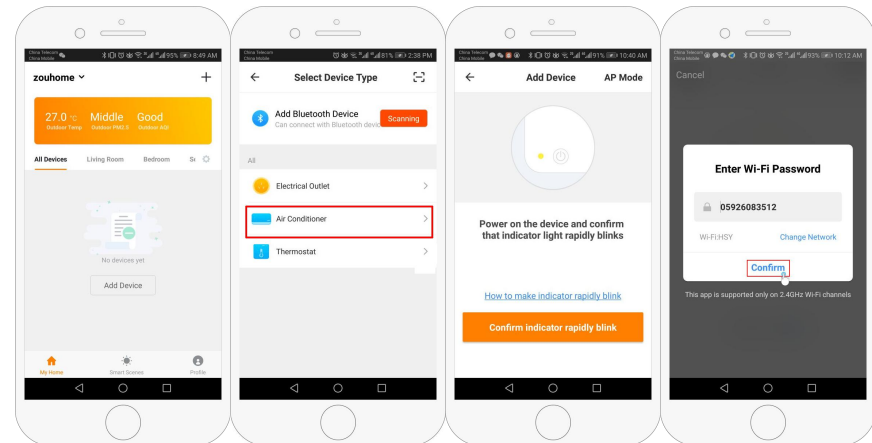


Fig 4-1

fig 4-2

fig 4-3

fig 4-4

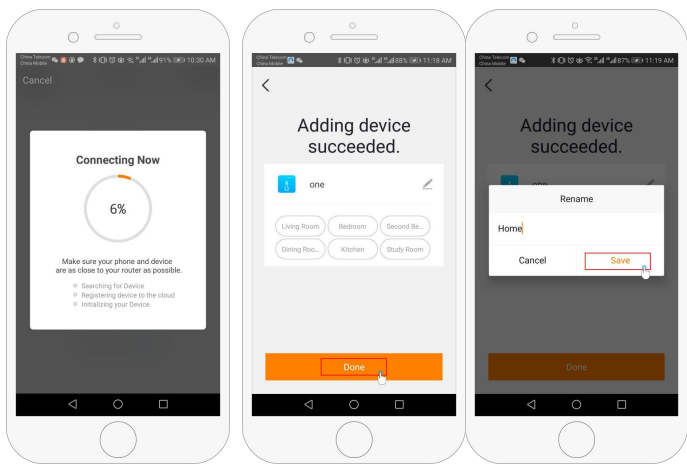



Fig 4-5

Fig 4-6

Fig 4-7

Step 5

If your router doesn't support it or your wifi signal is weak or you can not connect by EZ mode, press the AP Mode on the upper right corner in (Fig 5-1) If you have connected your thermostat successfully, please ignore the app setting as blow On your thermostat Click Confirm  icon rapidly blink then select your network and back to your app to enter the password of your wireless router (fig 4-4) and confirm.The app will go into the page in (Fig 5-2) Press Connect now to select the wifi signal Smartlife-XXXX of your thermostat (Fig 5-3) Go back to your app and click Connect now then the app will connect automatically (Fig 4-5) This may typically take up to 5~90 seconds to complete.

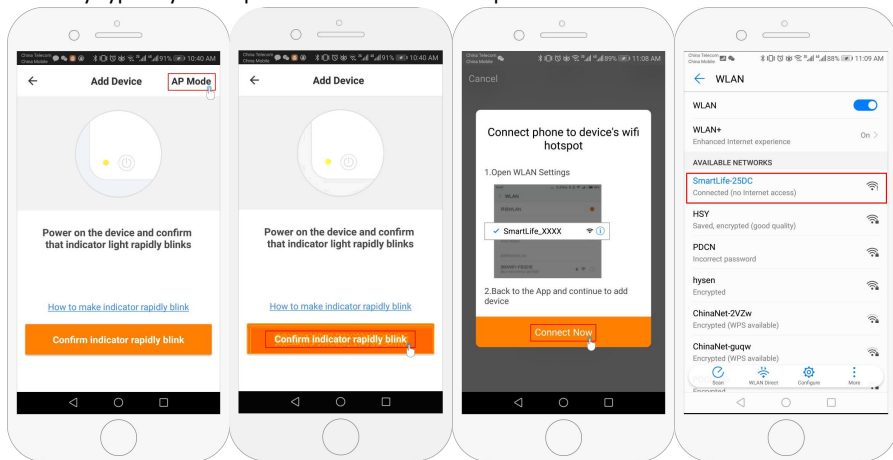


Fig 5-1

Fig 5-2

Fig 5-3

Fig 5-4

Step 6 APP Device interface operation and How to create a group

1. Power on/off button
2. Mode key: Manual mode, Auto mode, Holiday mode.
3. Child lock: After the child lock turned on, the APP cannot be operated.
4. Set key: After clicking on, you can select the programmed mode (5+2, 61, 7 days) and set the

temperature and time for the six periods of the weekday and weekend.

5. Basic information page (Fig 6-1、 Fig6-2)

Device name: The device name can be modified according to your demand.

Device location:

Share device: Share the device to the mobile phone or email account of the registered family member

Create Group: Add all the devices which need to operate at the same time to the created group for convenient operation.

Device information; Contains virtual ID; IP address; Mac address; Device time zone

Remove device: After deleting the device, you need to reconnect the network if you want to use it.

Third-party controls supported: amazon alexa/google assistant/IFTTT, click to enter, you will see the steps

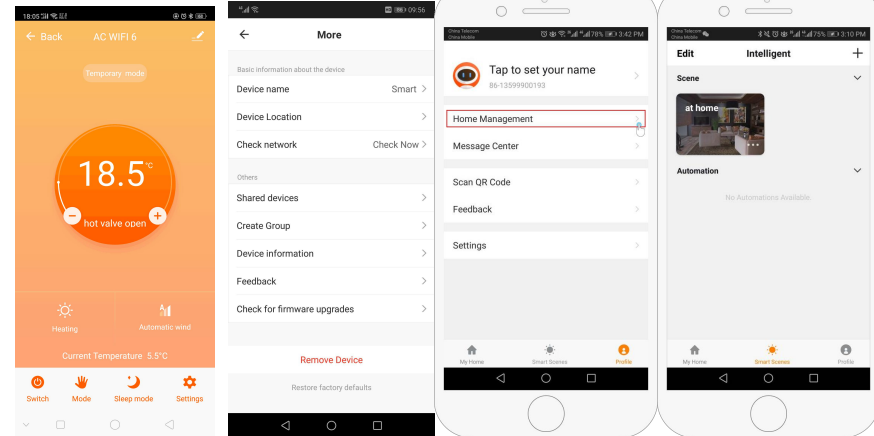


Fig 6-1

Fig6-2

Fig6-3

Fig6-4

Step 7 Family management (Fig6-3)

Add family: Family naming; family location setting; select room name, you can also add room name, upon completion, it will enter the Home Setting interface.

Step 8

What is your Smart Scene and How to use it? (Fig6-4)

set your home to automatically turn on thermostat on when you back home(fig).Press + button into the setting

Step 1:You can set a condition for task like Temperature below 21 degree,then click save , (condition:temp.,Humidity,weather,PM2.5, Air Quality,Sunrise/Sunset,Device)

Step 2: Add a task. Press + to Select Device (Power,Set Temp,Lock Mode) to act, then Save.If you want to delete the scene,you can press Delete in the end.

NOTE: The room sound could be turned on/off in PROFILE-SETTING-SOUND. The sound is matched with the default of your system